



Newcomers News

Published by the Newcomers Club of Grand Traverse
(Antrim - Benzie - Grand Traverse - Kalkaska - Leelanau)

April 2006

DATES TO REMEMBER

UPCOMING PROGRAMS

April 25

May 23

BOARD MEETINGS

April 17

BOOK CLUB

April 4

BRIDGE

Team - 1st Fri.

Ladies - 2nd Thurs.

Ladies - 4th Thurs.

DINING OUT

April 23

EUCHRE

Group 1 - 2nd Wed.

Group 2 - 1st Thurs.

MEN'S BREAKFAST

April 12

OUT TO LUNCH

April 19

SINGLES

April 30

WALK IN THE WOODS

April 15

Please join us for our next program:

“Traverse City Beach Bums”

Tuesday, April 25

7:00 to 8:45 p.m.

Traverse Area District Library
610 Woodmere Ave., Traverse City

It's the end of April so it must be spring! And what's the most important part of spring other than warm weather, no more snow, flowers in bloom, sunshine, and mom's apple pie? Why, **baseball**, of course!!! So please join us for a program about the **Traverse City Beach Bums**, Traverse City's own professional baseball team.

Leslye Wuerfel, President and General Manager, will tell us all about their team and Wuerfel Park. So...come on out on this spring evening and let's talk baseball!



Questions? Call Matt Albert, 941-4143, or Royce Rule, 946-4502

Find us on the Web at:
<http://gtnewcomers.org>

**Note new
address!**

Don't Miss These Upcoming Special Events:

Spring Dinner - May 23, TC Country Club

Picnic - June 25, Bowers Harbor Park

Details in future newsletters.

**2005-2006
Board of Directors**

Co-Presidents

Patti Constance 935-4805
Nancy Harris 223-9844

Co-Vice Presidents

Matt Albert 941-4143
Royce Rule 946-4502

Secretary

Elaine Pentilla 334-4881

Treasurer

Joe Harris 223-9844

Activity Groups

Joan Wallace 222-0060

Calling Committee

Georgia Stoeber 938-5846

City Hostess

Sharon Finch 947-8403

Directory Editor

Lori Brickman 223-4584

Helping Hands

Marlene Steider 922-2183

Membership

Judy Albert 941-4143

Newsletter

Jody Bennett 932-9249

Note new email:
bennettjj@charter.net

Public Relations

Diane Gluszewski
933-9152

Executive Assistant

Elaine Novak 276-0361

Past Presidents

Letha Cairns 271-6831
Carol Thompson 276-5080

Website

George Kobernus
933-9321
gkobernus@chartermi.net

PRESIDENTS' LETTER

APRIL 2006

Soon, we will be welcoming our "snowbird" friends as they return to what we hope will be a sunny, warm spring. For those of us who chose to "tough it out", we've managed to keep ourselves busy through the winter with outside as well as inside activities. We'd like to thank all of the activity leaders who make our entertainment possible. One of our newest endeavors is the Art Sampler, led by Joan Wallace. Joe Stearns, master of handcrafted furniture, treated us with a tour of his home and workshop. He is an engaging, interesting and talented artist, and those of us who attended have a greater respect and understanding of his craft. If you would like to view his work, his website is www.wholegraindesigns.com.

Last month we were happy to announce a new service, the Companion Connection. We hope you'll consider adding your name and interest to our list. You could be pleasantly surprised at how many others might be interested in sharing an adventure or a simple outing.

Many thanks to Matt Albert for arranging the enjoyable musical program for February. The talented quartet from the symphony entertained us with beautiful selections and personal stories. Also, we hope the Cherry Capital Chorus may have recruited some new members from our group. We thank them for their time as well as the donation of two tickets for upcoming performances.

Next month promises to be great fun. We will have Leslye Wuerful, President/General Manager of the Traverse City Beach Bums. Be sure to join us on April 25 and learn about what the Beach Bums will be bringing to Traverse City. Also, mark your calendars for the Spring Dinner on May 23.



Nancy and Patti, Co-Presidents

Nancy Harris and Patti Constance

Board Meetings

Members are encouraged to attend Board meetings. The next meeting is Mon., April 17, 2006, 10:00 a.m., Horizon Books, lower level.

If you would like to add items to the agenda, please contact either of the Co-Presidents before the meeting.

**Condolences
to Nancy Jacobs,
former Newcomer Board
member, and her family on the
passing of Jim Jacobs**

Jim and Nancy spent many hours volunteering for Newcomers and other community activities. Newcomer members and friends throughout the area will miss him.

**NEW
MEMBER
CORNER**



**Susan Haley (Okemos, MI)
Rod and Marilyn Rebant
(Sanford Lake and Midland County, MI)
Chris and Judy Scurto
(Livonia and Charlevoix, MI)**

Please help recruit members!

Know someone who has just moved to the area? Contact **Sharon Finch, City Hostess**, with their names and she will do the rest.

Dues for the remainder of the year
(through August) are \$15.

947-8403, hsfinctc@aol.com

APRIL INFO

APRIL FOOL!!!

Who or what is an April Fool? How and when did the whole April Fool tradition start? In line with this newsletter's efforts of enlightening it's readership, I will attempt to bring you the true facts.

Prior to the late 16th century, the new year did not begin on January 1. It started on April 1. At that time Charles IX issued a proclamation changing the world over to the Gregorian calendar. Thereafter, the year ended on December 31 and the new year began on January 1. The world had celebrated the new year in late March and culminated in a festival on April 1. Given the state of transportation and communication at the time, most of the world was not right up to date (no pun intended) for some time. The "smart" people in Paris and within easy travel thereof, began calling all of the people who still innocently celebrated the new year on the old date fools. Thus, April Fools.

A tradition grew up of playing tricks on people on April 1st. In Scotland the tricks were played on the last day of March and on April 1st. There the 1st day of April was called "taily day" and involved tricks about a person's posterior. It is thought by some people that it was there that the "kick me" sign tradition began.

Gagsters and comedians have plied their trade on April 1st ever since then. If you Google "April Fool Day" you can find what have been voted the best 100 pranks played on the world at large. The best is said to be the report of the Swiss spaghetti tree. The report showed pictures of women gathering armloads from trees. Johnny Carson showed a film of the harvest. The newspaper that published the report on the tree actually got requests from all over the world asking for seedlings and information about the climate that the trees would grow in.

The only Michigan prank that I know of was the report a few years ago about a swing bridge which was going to be built on Mackinac Island. It was going to be built on a base that would allow it swing over to St. Ignace or over to Mackinaw City depending where people were waiting to go over to the Island. A local television station created and ran the story. They were so credible that a number of watchers were fooled. I am not kidding. This is not an April Fool joke. (If you can't trust your staff writer, whom can you trust?)

If readers would like, they could report the best or worst prank played by them or to them and we could have our own contest. Send them to bennettjj@charter.net.

Bob Luoma, Staff Writer

Activity Group News

Activity groups: A great way to make new friends is through our various activities. All of these groups require a leader to make this possible. I would like to thank all the activity group leaders for their conscientious work in keeping our groups going. We are having good participation. If you need to contact me, whether for a comment or a great idea for a new group, please note my change of phone number. **My new number is 222-0060**, or you may reach me on my cell phone at 590-7246. Joan Wallace, Coordinator

BOOK CLUB

The Newcomers Book Club has been sailing along with some wonderful discussions this season. The leaders have done a stupendous job, and I want to thank all of them. We have made some changes for the remaining months so please make note.

Tuesday, April 4, *The Art of Happiness* by the Dalai Lama. This fascinating alternative to our usual selections should lead to some wonderful insights. Leading this discussion is Joan Wallace.

Future reminders: The May book is *The Living Great Lakes* by Jerry Dennis, and June has changed to *Compass of the Heart* by Priscilla Cogan.

We meet at Horizon Books, lower level the first Tuesday of the month at 10:00 a.m. Please join us. Contact Letha Cairns at gcairns@chartermi.net or 271-6831.



CARDS

BRIDGE:

Team (1st Friday): Tom or Georgia Stoeber, 938-5846, tstoeber@bsamail.org, 7:00 p.m., Cedar Creek Commons off of Cherry Bend Road.

Ladies (2nd Thursday): Nancy Ravas, 932-1747, Scott's Harbor Grill, 11:30 a.m. Players at all levels are welcome.

Ladies (4th Thursday): Gail Hoffman, 946-1126, location has changed this year to Roma Restaurant, 11:30 a.m. Participants play as individuals, not teams.

Team Round Robin: Geri Dancy, 929-4787



EUCHRE:

Euchre Groups 1 and 2 are off and running! The response has been overwhelming. Both groups are filled to capacity! HOW-EVER, if you would like to play once a month (and know how to play), sign up to be on a sub list. Call Karen Coquillard at 932-9883. Subs must sign up in two's.

Both groups report a lot of fun, sandbagging, snacking and non-sense was enjoyed by all who played.

Group 1 (2nd Wednesday): Karen and Mike Coquillard, 932-9883

Group 2 (1st Thursday): Tom and Patti Culance, 935-4805

Other Activity Group Contacts

If there is not a specific date listed for an activity you are looking for, there may not be one planned for the month of the newsletter.

For more information, call the activity coordinator(s):

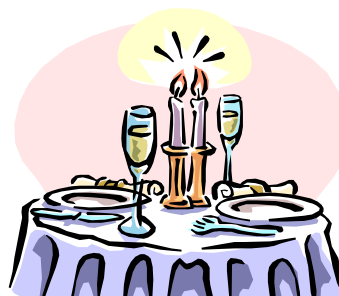
Art Sampler - Joan Wallace, 222-0060
Day Trips - Barbara Cochrane, 267-5547
Golf - Dick Hayes, 938-1705

FOOD AND FELLOWSHIP

Men's Breakfast

The Men's Breakfast meets at the **Omelette Shoppe next to the Wild Birds Unlimited store in Campus Plaza** every second Wednesday of the month. Reservations are not required; just show up. Questions? Call George Kobernus, 933-9321.

Wednesday, April 12, 9:00 a.m.
Omelette Shoppe



Dining Out

Out -To- Lunch Bunch
A fun bunch always making new friends. Hope you can join us for great food and a wonderful view on:

Wed., April 19, 12:30 p.m.
Lobdell's Restaurant
(GL Culinary Inst.)

2nd floor of the Great Lakes Campus Bldg, 1715 E. Front St., Traverse City. Lobdell's is located between the Holiday Inn & T.C. Seniors Center. Please note: time change to 1/2 hour earlier than usual. Please call your reservation to Carol Hosler, 933-4397 by Sat., Apr. 15.

This area is home to many good restaurants in various price ranges. We will usually meet on the second or third Sunday of the month. Please join us in the food and fellowship. Reservations required. Please call Constance Kilbride a week before to reserve, 649-4888.

Sunday, April 23, 5:00 p.m.
Bowers Harbor Inn
13512 Peninsula Drive

Bring your non-member friends and relatives! If we have at least 20, we will have a special menu with multiple courses and several entrée options @\$25.

SINGLES

April 30, 11:00 a.m.
Sunday Brunch at the
Bluebird Restaurant in Leland

Full Breakfast Bar, A Carving Station, Pastries, Etc.
11.99 plus tax and tip, call Sharon Baswell at
231-947-4694

June 23 Barbecue at Mary O'Brien's house. Watch for more information as the date approaches.

SAILING

There are a few Newcomers who spend most of the winter dreaming of warm weather, soft breezes, and sailing on Grand Traverse Bay. **Whether you are a seasoned sailor or have never been on a sailboat, you can join us. Sailboat owners are always looking for crew.** We seldom stay out for more than a few hours and typically sail in the afternoons when the winds and weather are best. There is no cost for this activity as you bring your own lunch and water. If you'd like to know more about the Newcomers Sailing Group, contact George Kobernus, 933-9321, gkobernus@chartermi.net

A WALK IN THE WOODS

Bring your mother, father, children, grandchildren and even your dog on a leash. Walks will last between one and two hours. During the week before each walk if you e-mail (wallacerg1@yahoo.com) or call Ron at 231-222-0060, cell # 231-590-2746, I will notify you if a walk has to be canceled. On Fridays I will e-mail a list of those who say they are coming. If at the last minute you find you can join us please do.

April 15th 11:00 a.m.
Pyramid Point

Off 22, north of Glen Arbor take Port Oneida Road to the trail head on your left. Just before the trail head it will feel like you are going through a farmer's yard. You can also get there coming in Basch Road.

Future outings: May 13, Old Mission Point Park; June 3, Empire area farm



Community Volunteer Opportunity

Many Newcomer members quickly become involved in various community projects. As a service to our members we will describe some of those volunteer activities. This month's selection was submitted by Carol Thompson. Please send other options to the editor.

What is a Probate Court Volunteer? A volunteer for the Grand Traverse County Probate Court is a citizen like yourself, who gives time and energy to helping someone who has, in one way or another, come into contact with the Probate Court." Probate Court primarily handles youth, family, and developmentally disabled adults and the elderly.

Qualifications to be a Probate Volunteer are being honest and sincere but above all genuinely interested in helping people. Special training sessions or orientations are provided. The general orientations are usually scheduled three times during the year. To volunteer, contact the Director of Volunteer Services, Mrs. Linda Fawcett, a former Treasurer of Newcomers, at 922-4827. The office is located at the Civic Center, 1125 West Civic Center Drive. Below is a list of some of the Volunteer Roles with an abbreviated description.

Court Appointed Special Advocates

(CASA): Are concerned with achieving permanency for children who are in foster care.

Exit Interviewer: Conducts the final interview with a youth on probation and his parent(s), after the youth has been discharged. A standard form is used by the volunteer.

Guardianship/Friendly Visitor: Visits people, usually elderly, who may be under Court guardianship who need companionship. Often they are living alone or are in convalescent homes.

Financial Investigator : Interviews people for whom the Court must determine eligibility to contribute toward the cost of services provided. Or the Financial Investigator may determine restitution charges.

Probation Monitor: Works with the youth who has had "Formal" disposition-and who has a staff probation officer in the Court's Juvenile Division. Although this is an authoritarian role, friendships may develop. (I have done this.)

Probation Officer: For the first time offenders, and relatively minor offenses, the youth is usually given the informal disposition, and a volunteer is the probation officer. (I have also done this.) I think this has changed in the last year or so and this position is now a Probation Monitor.

Citizens Panel: This is a fairly new program which I assisted in setting up the format. Youth who have had their first experience with the Court because of shoplifting, otherwise know as retail fraud. The volunteer supervises a juvenile for up to two months while the youth completes the tasks he/she has "Promised" the committee to complete. The Panel is held on an as-needed basis with volunteers rotating and participating if available at that time.

Office Assistant: General office duties in the Court's offices.

Tutors: Teach those who need help in a variety of subjects with the greatest demand in reading. Most of the children-at-risk are doing poorly in secondary school, and may not be fulfilling their potential.

Learning Partners: Are special tutors for elementary school children who need help academically, and may benefit from out-of-school learning experiences as well.

Guardians and Conservators: Appointed by the Judge, and accepted by a volunteer, this is a very special service involving developmentally disabled adults and the elderly, primarily. Additional training sessions are required.

Transporters: Volunteers who transport juveniles from Court to various detention homes.

David L. Stowe is the Probate & Family Court Judge and is very involved in developing and improving programs to better help the youth in our communities. Consequently, volunteer roles are frequently tweaked and there is always abundant support for the Volunteers.

If anyone has any questions, please feel free to call me, Carol Thompson, 276-5080. E-mail dickthompson@chartermi.net Or you can call Linda Fawcett at 922-4827.

Patronize our sponsors

Allstate Insurance

Mike Cox Agency, Kalkaska
231-258-3252
866-344-3252 (toll free)

Associates in Family Dentistry

Joseph M. Stayman, D.D.S.
4020 W. Royal Dr. 946-9644

Auntie Pasta's Restaurant

2030 S. Airport Rd.
(Logan's Landing) 941-8147

R. W. Baird & Co. Investments

1001 Bay St. , TC, 933-6050

Banfield Pet Hospital

2544 Crossing Circle (next to
PetSmart) 922-9844

BATA- Public Transportation

3233 Cass Rd. 941-2324

Bay Shore Framing

145 E. Front St. 946-9302

Bob's Furnace Svs.

2282 Cass Rd. 941-4064

Castle Carpet Care (& Upholstery)

2801 Castle Dr., Interlochen.,
276-2118

Climatron, Inc.

3055 Cass Rd., TC, 946-9650

The Copy Shop - Printers

514 E. Front St. 947-2080
525W. 14th St. 941-9160

The Dance Center

225 E. 14th St. 947-6820

Dave's Garage

Foreign & Domestic
911 Hastings 933-0215

East Bay Family Dentistry

Jan Manning D.D.S.
862 Munson Ave 946-4443

Edward Jones Investments

Briant Sikorski
12930 So. West Bay Shore Dr.
947-3032

Epiphany Hair Salon

518 E Front St. 933-8010

Gaudette & Co CPA's

1107 East 8th St. 946-8930

Goodyear Auto Service Center

436 W. Front St. 922-2600

G.T. Ophthalmology Clinic, PC

929 Business Park Dr. 947-6246

G.T. Pavilions

1000 Pavilion Cr.
932-3000

Grand Traverse Resort & Spa

231-534-6750
1-888-437-2772

High Point Golf Club

555 Arnold Rd
Williamsburg 267-9900

Kids Creek Children's Clinic

5024 North Royal 935-0555

Legacy Financial Svcs.

Kelly Rowe 933-0631
13919 S.W. Bay Shore Dr.

William Lee

Ameriprise Financial
3337 S. Airport Rd. W., #4, TC
935-1457, x19

Mary Kay Cosmetics

Pat Westbrook 929-1830

North Woods Clinical Massage Therapy

Susan Robinson 499-9664

Northern Auto Service

501 So. Airport Rd. 947-1840

Northwestern Michigan College

1701 E. Front St. 995-1000

Oakwood Veterinary Hospital

924 Hastings 941-7241

Oleson's Food Stores

1101 S. Garfield 947-6750
3850 N. Long Lake Rd.
947-6510

Old Towne Optical

Dr. Jeffrey Pulk
515 S. Union 946-0333

One-Hour Martinizing

115 Pine St. 946-4990
726 Munson 946-3930

Oryana Nat. Foods Coop Mkt.

260 East Tenth

Pizza Hut

3030 US 31 South 947-2077
1731 US 31 North 938-1495

Reynolds-Jonkhoff Funeral Home

305 6th St. 947-6347

Schelde's Restaurants

Traverse City

SRC Mortgage

Debbie Highway
548 E. Front St.
995-7435, cell 231-357-5577

State Farm Insurance

Mark Newhouse
933-5400

Stone Mountain Carpets

Charlie Stiehl
800-786-6333



The Newcomers Club of Grand Traverse
C/O Judy Albert—Membership
7880 Maple Leaf Drive
Traverse City, MI 49684
mjalbert@chartermi.net

Quick Tip! If you change your email address please notify us at mjalbert@chartermi.net.
Email is the best way to get information to members between publications of the Newcomer News.